

Toronto's Shelter System Flow Data

Toronto Housing and Homelessness Services Planning Forum
Wednesday, October 6, 2021, 10:00 am

Heath Priston, Manager, Business Intelligence Unit
Shelter Planning & Integrity section, Shelter Support & Housing Administration



Where to get the data: dashboard or open data

The screenshot shows the City of Toronto website dashboard for Shelter System Flow Data. The page title is "Shelter System Flow Data - City". The URL is <https://www.toronto.ca/city-government/data-research-maps/research-reports/housing-and-homelessness-research-and-reports/shelter-system-flow-data/>. The page features a navigation menu with categories like Services & Payments, Community & People, Business & Economy, Explore & Enjoy, and City Government. The main content area includes a search bar, a "I want to..." dropdown, and a breadcrumb trail: City of Toronto / City Government / Data, Research & Maps / Research & Reports / Housing & Homelessness Research & Reports / Shelter System Flow Data. The main heading is "Shelter System Flow Data". Below the heading, there is a share and print button. The text describes the data, its purpose, and how it is updated. A sidebar titled "In This Section" lists various reports and data sets, including "Housing & Homelessness Research & Reports", "Overdoses in Homelessness Services Settings", "Shelter System Flow Data", "Housing Stability Service System Overview", "Daily Shelter & Overnight Service Usage", "Social Housing Waiting List Reports", "Statistics on Extreme Cold Weather Alerts in Toronto", and "Deaths of Shelter Residents". At the bottom, there are tabs for "Monthly Data", "Historical Trends", and "Additional Information".

The screenshot shows the Open Data Catalogue for Toronto Shelter System Flow. The page title is "Toronto Shelter System Flow". The URL is <https://open.toronto.ca/dataset/toronto-shelter-system-flow/>. The page features a navigation menu with categories like OPEN DATA, Data Catalogue, Knowledge Centre, About, Gallery, and Contact. The main content area includes a search bar and a breadcrumb trail: OPEN DATA PORTAL HOME / OPEN DATA CATALOGUE / TORONTO SHELTER SYSTEM FLOW. The main heading is "About Toronto Shelter System Flow". Below the heading, there is a "Details" section with a "Data quality score" of Silver, "Data last refreshed" on Sept 14, 2021, and "Refreshed Monthly". The "Data type" is "Table". The "Civic issues" are "Affordable housing" and "Poverty reduction". The "Topics" are "Community services". The "More information" section includes an "External Link". The "License" is "Open Government License - Toronto". The "Limitations" section states that the data reflects only people who have used an overnight service and does not include people exclusively sleeping outdoors or using other homelessness services.



<https://www.toronto.ca/city-government/data-research-maps/research-reports/housing-and-homelessness-research-and-reports/shelter-system-flow-data/>

<https://open.toronto.ca/dataset/toronto-shelter-system-flow/>

Definitions

People who are entering the shelter system (**Inflow**):

- **Newly Identified**: People who entered the shelter system for the first time.
- **Returned from Permanent Housing**: People who previously used the shelter system, then moved to permanent housing, and have now returned.
- **Returned to Shelter**: People who were previously using the shelter system, then did not use the system for 3 months or longer, and have now returned. Some other communities may call this indicator “Returned from Inactive”

Definitions

People who are leaving the shelter system (**Outflow**):

- **Moved to Permanent Housing**: People who were using the shelter system and have moved to permanent housing.
- **No Recent Shelter Use**: People who were using the shelter system previously, but have not used the shelter system in the past three months. Some other communities may call this indicator “Moved to Inactive”.

People who are **Actively Experiencing Homelessness**:

- People who have used the shelter system at least one time in the past three months and did not move to permanent housing.

What counts as permanent housing?

SMIS Discharge Disposition is recorded as Permanent Housing

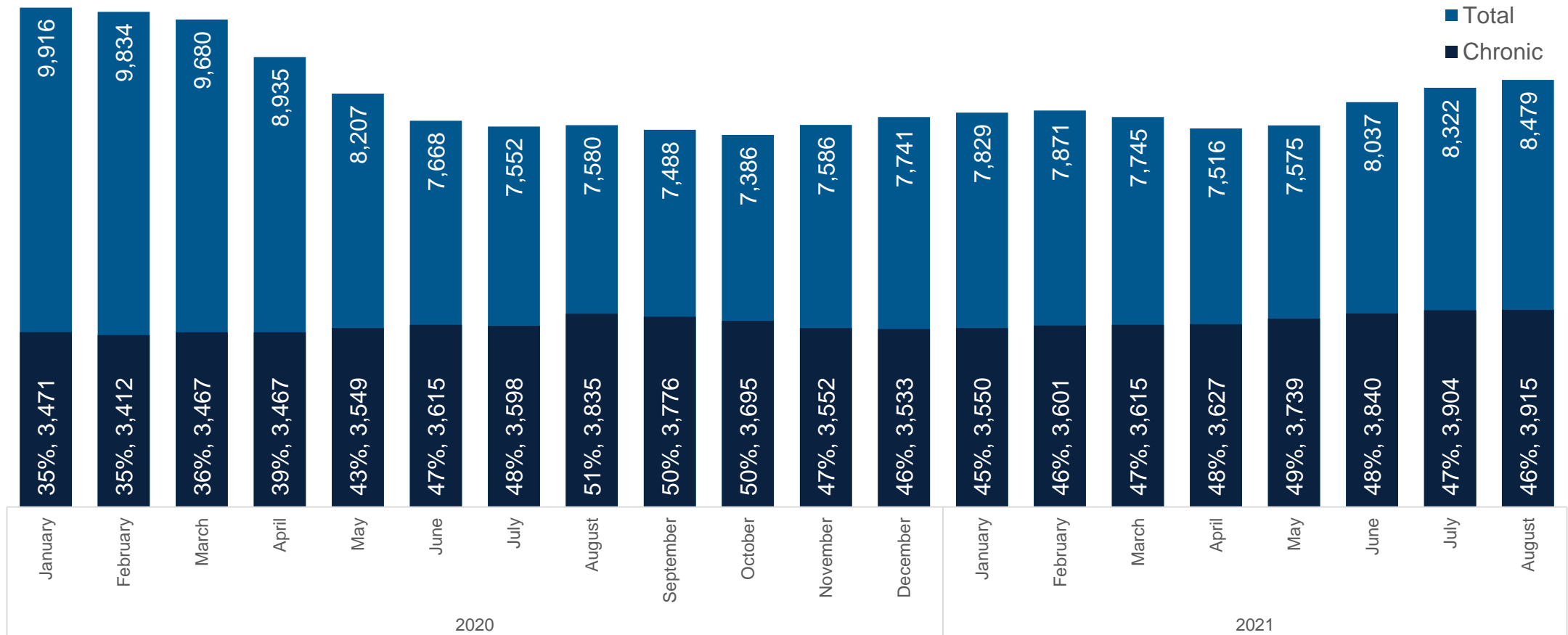
Any of the following types can be indicated under discharge reason:

- Private market housing
- Social housing
- Supportive housing
- Long-term care facility
- Returned home or to family



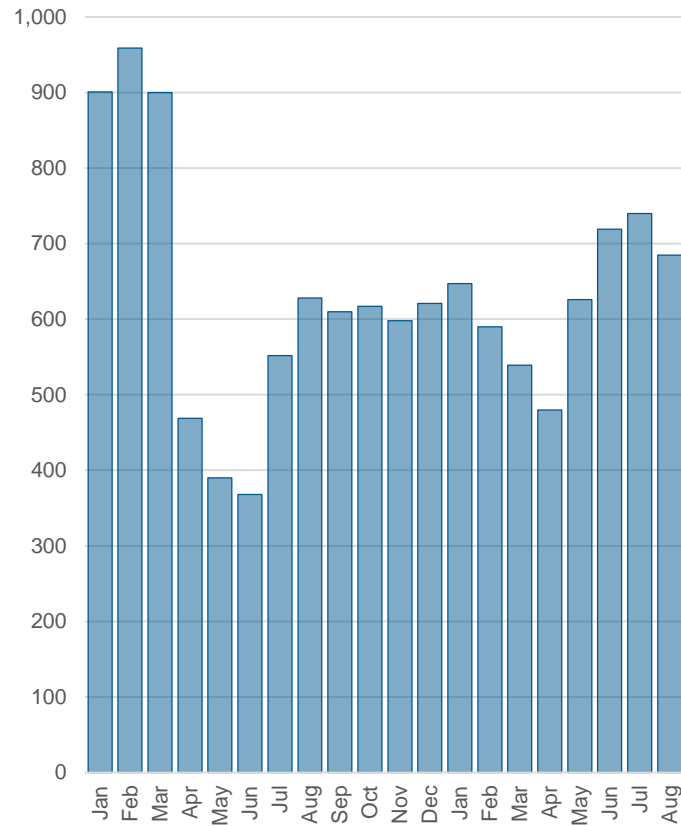
How are we using the data?

We track the number of people experiencing homelessness in the shelter system

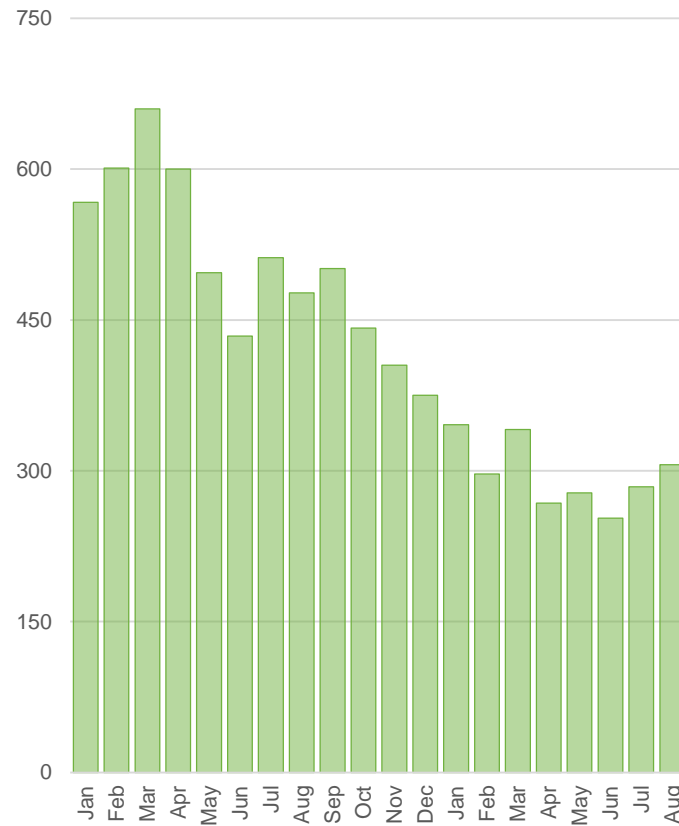


We monitor our efforts to make homelessness rare, brief, and non-recurring

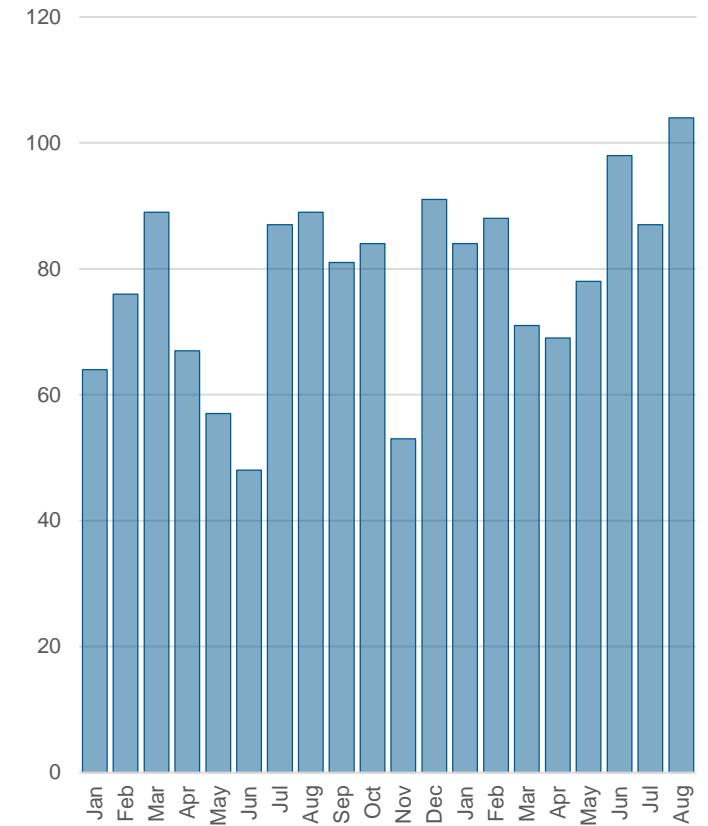
Rare Newly identified as homeless



Brief People moved to permanent housing



Non-recurring People returned from permanent housing



We look at how the types of shelter flow contribute to the overall picture, for the whole population, as on this slide, and...

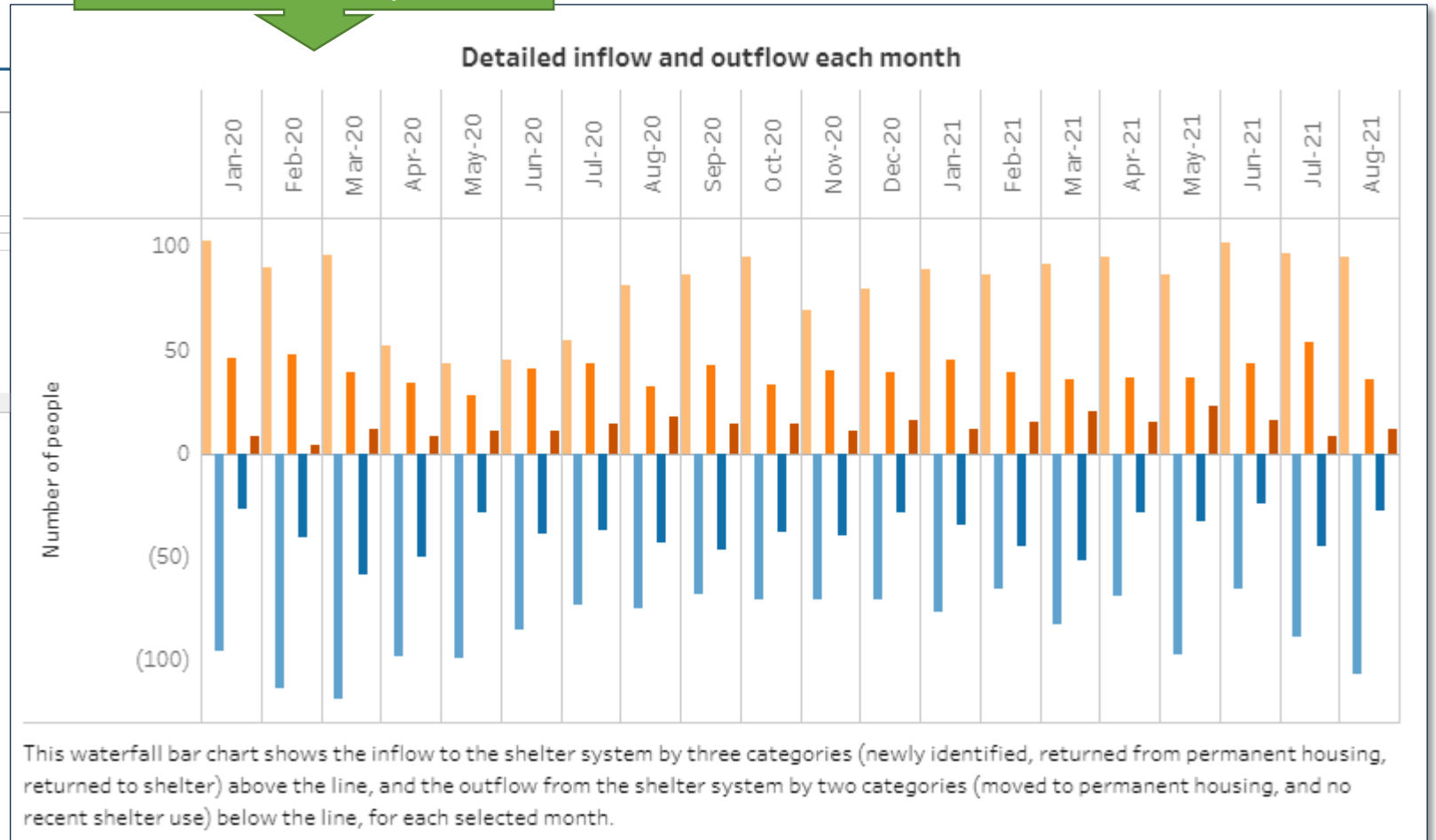
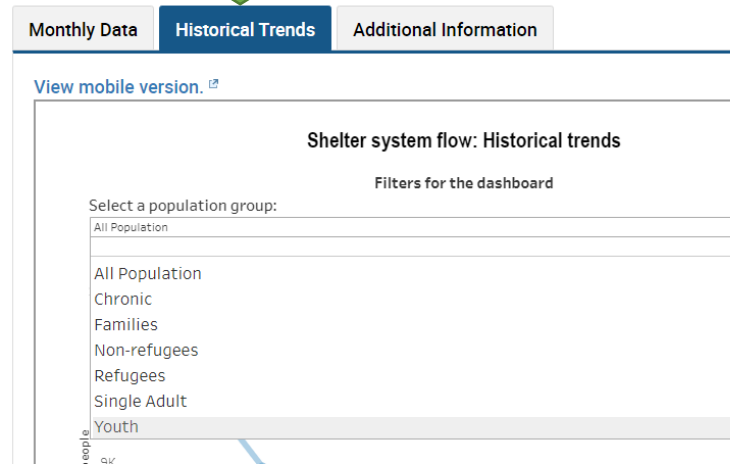


Bonus slide! You can also investigate the flow components for specific populations in the Shelter System Flow Dashboard

In the Historical Trends tab, pick your desired population group

Scroll down to see the flow types – this is the one for youth

[See it live by clicking this link](#)



Prepared by

**Business Intelligence Unit,
Shelter Support & Housing Administration
City of Toronto**

sshadata@toronto.ca